

# Human Claudin 18.2 Protein-Nanodisc

Cat. No. CLD-HM10N

## Description

<b>Source</b>	Recombinant Human Claudin 18.2 Protein-Nanodisc is expressed from HEK293 with His tag at the N-terminus (FITC-equivalent protein is fused on cytoplasmic part). It contains Met1-Val261.
<b>Accession</b>	P56856-2
<b>Molecular Weight</b>	The protein has a predicted MW of 49.10 kDa.
<b>Endotoxin</b>	Less than 1EU per µg by the LAL method.

## Formulation and Storage

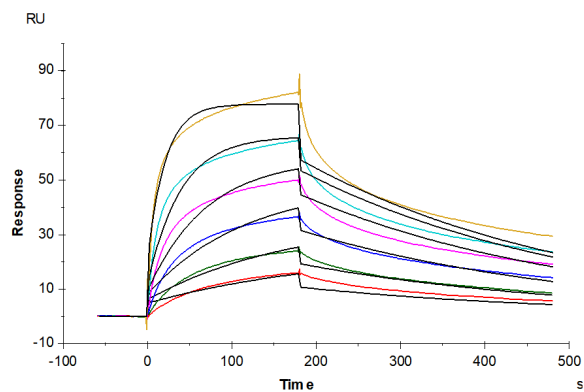
<b>Formulation</b>	Supplied as 0.22 µm filtered solution in PBS (pH 7.4). Notice: Not recommended for immunization and flow cytometry in mammalian cells.
<b>Storage</b>	Valid for 12 months from date of receipt when stored at -80°C. Recommend to aliquot the protein into smaller quantities for optimal storage. Please minimize freeze-thaw cycles.

## Background

Claudin18 (CLDN18) belongs to the large claudin family of proteins, which form tight junction strands in epithelial cells. CLDN18 is specifically expressed in the stomach and lung. CLDN18 has two alternatively spliced variants, CLDN18.1 and CLDN18.2. Isoform 2 (Claudin 18.2) is abundant in gastric tumors.

## Assay Data

### SPR Data



Human Claudin 18.2 Nanodisc, His Tag captured on CM5 Chip via Anti-His Antibody can bind Anti-Claudin18.2 Antibody with an affinity constant of 6.63 nM as determined in SPR assay (Biacore T200) (QC Test).